

JEWELRY

Fun, Affordable, Casual



JEWELRY

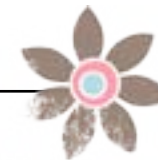
Our jewelry selections are available in striking sterling silver and antique silver-plated pewter that will beautifully showcase your images!

The jewelry line was purposefully designed to combine pieces that offer affordable casual elegance plus the quality of image you have come to expect from our studio. These pieces will be treasured by you and your family for years to come.

Each piece is handcrafted...look for the "made with love" heart attached to every item.

Enjoy our collection!

When you order I will mock up proofs within the same pictures as below to show you how your product should look like.



brünildamönnig
PHOTOGRAPHY

JEWELRY

Necklaces

JORDAN

marches to her own drum

You will love Jordan! This 1¼" square pewter pendant with a pearl attached to the bottom swings off a sterling silver filigree bead. Along with the 3mm black rubber cord necklace, Jordan's eclectic mix has a special look all its own.

Dhs 525



DIANA

is sleek

This 1½" square pendant showcases two images - one on the front and one on the back! Wear it attached to a sleek sterling silver hammered tube bead on a 3mm black rubber cord. This necklace gets noticed!

Dhs 640



EMILY

Loves beads

Our largest pewter pendant (1¼" square) comes with a pearl drop and is attached to a black beaded 18" necklace. Beads are what it is all about!

Dhs 340



FERGGI

For a different look

This is the Emily pendant, but on a 18" textured cable chain and has both a pearl and a heart that sways from the bottom of the pendant. Ferggi has to be different!

Dhs 340

JEWELRY

Necklaces

ASHLYNN

for a very casual look

This round pewter pendant comes with a fun heart dangled from the bottom to remind you of who you love! Worn on a 30" ball chain, the image will be a $\frac{1}{16}$ " circle in size.

Dhs 260

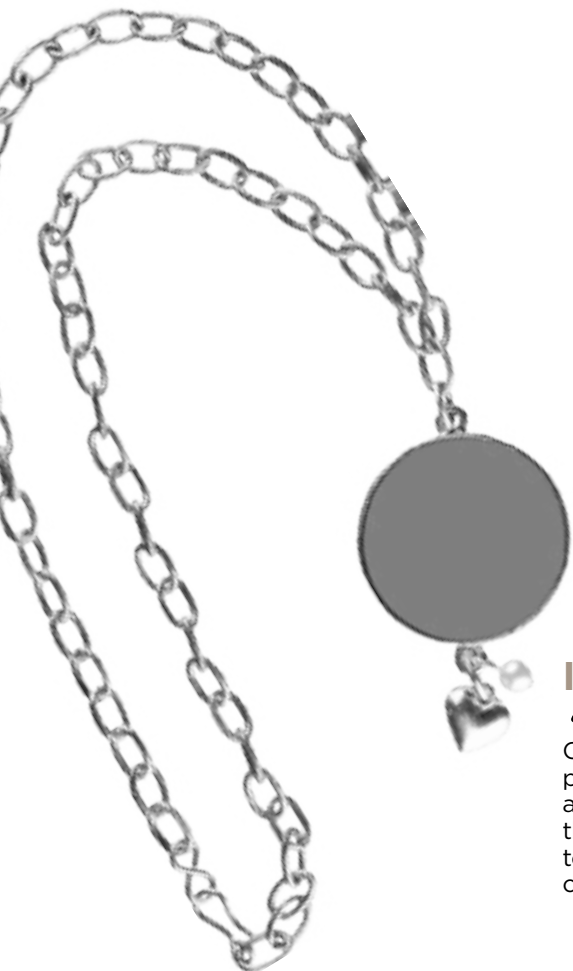


IRENE

is bold

Our largest pewter round ($\frac{1}{4}$ " circle) pendant comes with both a silver heart and pearl dangling from the bottom of the pendant. The pendant is attached to a large textured 18" cable chain. This combination makes a bold statement!

Dhs 340



LAUREN

is a charmer

The newest addition to our jewelry line is our charm necklace, Lauren. This necklace includes two photo charms and a silver heart charm. The large heart photo charm measures $1 \frac{1}{16}$ " x $2 \frac{2}{16}$ " and the small square charm is $\frac{1}{2}$ " x $\frac{1}{2}$ ". The 21-inch small textured cable chain features a large textured cable chain insert with a garnet colored bead.

Dhs 380



GRACE

is gorgeous

This vertical rectangle pewter pendant is $\frac{7}{8}$ " x $1 \frac{1}{2}$ ". Grace has a small textured 18" cable chain with a front toggle closure and a simple silver heart that dangles from it.

Dhs 340



JEWELRY

Necklaces



BETH

frames your portrait

The rectangular sterling silver pendant frames your image like a portrait! It comes on a beautiful, yet simple, sterling silver 18" snake chain. The pendant is $\frac{5}{8}$ " x $\frac{1}{2}$ ".

Dhs 380

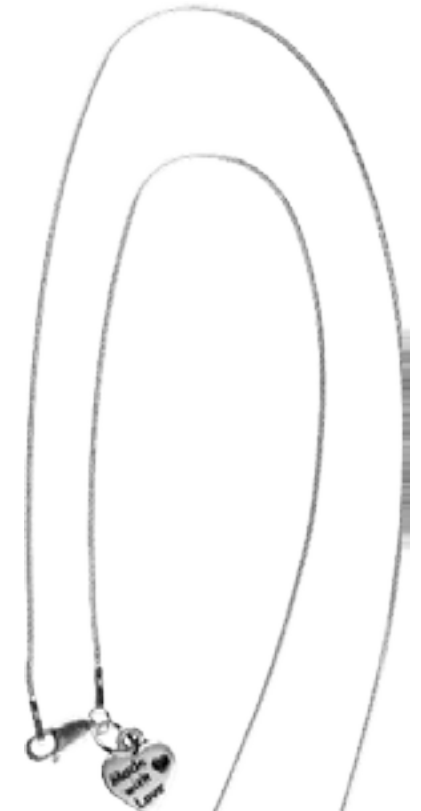


KRISTEN

loves simplicity

This favorite pendant is a great size. Not too large, and not too small, the simple sterling silver pendant is $\frac{5}{8}$ " x $\frac{5}{8}$ " square. It needs nothing more to make it complete, than the 1mm sterling silver 18" snake chain. Simplicity is beautiful!

Dhs 380



CAMPYRN

is a little bit sassy

This small $\frac{1}{2}$ " square lead-free pewter silver plated pendant has a swirled back that gives it personality. It comes on a beautiful, yet simple, sterling silver 18" snake chain.

Dhs 340



back

JEWELRY

Bracelets



BARBIE BANGLE BRACELET

is lots of fun

This antique silver-plated bangle bracelet holds one lead-free pewter $\frac{1}{16}$ " circle charm. And you get two images - one on both sides of the charm! An attached silver heart adds to the fun!

Dhs 340

AMY CHARM BRACELET

will charm you

Who doesn't love a charm bracelet? And what more could you want than a bracelet filled with charms of those you love? This antique silver-plated $7\frac{1}{2}$ " bracelet comes with one lead free pewter $\frac{1}{16}$ " circle charm that allows images on both sides.

BRACELET W/ 2-SIDED CHARM

Dhs 500



MEGAN CHARM BRACELET

is charming

A single sided alternative to the Amy Charm Bracelet, Megan is an antique silver-plated $7\frac{1}{2}$ " bracelet that includes one lead free pewter $\frac{1}{16}$ " circle charm with an image on the front.

BRACELET W/ 1-SIDED CHARM

Dhs 415

$\frac{1}{16}$ " SINGLE SIDED CHARM

Want to hear more clinking....add as many additional $\frac{1}{16}$ " single-sided charms as you want! The more the merrier!

(can be ordered with the Amy & Megan charm bracelets or separately)

Dhs 150



JEWELRY

Pendants



15/16" SQUARE PENDANT

This half" square makes a wonderful size pendant to showcase your image and wear with a necklace. It is made with lead-free pewter with an antique silver coating.

Dhs 215



5/8" CIRCLE PENDANT

A great size for an added charm for a bracelet or to wear alone on a necklace. It has the same look as our double sided circle...but order this when you only want to display one image. It is made with lead-free pewter with an antique silver coating.

Dhs 215



3/4" x 1" OVAL PENDANT

A little larger than our circles, this oval is a wonderful size and provides a different format for your images. It is made with lead-free pewter with an antique silver coating.

Dhs 215



3/4" X 1 3/16" RECTANGLE PENDANT

We love the rectangle and the possibilities it provides. This one makes a great vertical pendant. It is

Dhs 215

JEWELRY

Charms



1/2" CIRCLE CHARM

A companion to the mini square, this 1/2" mini circle also adds style to any charm bracelet or necklace. It is made of lead-free pewter with an antique silver coating.

Dhs 95



1/2" SQUARE CHARM

This 1/2" mini square makes a great add-on charm for any bracelet or necklace. It is made of lead-free pewter with an antique silver coating.

Dhs 95



13/16" DOUBLE SIDED CIRCLE CHARM

This is the same 13/16" double-sided charm that comes on the Amy Charm Bracelet. It is a perfect size for either an add-on charm or to wear on a necklace. It is made of lead-free pewter with an antique silver coating. Display two different images...or have

Dhs 295



13/16" SINGLE SIDED CIRCLE CHARM

This is the same 13/16" double-sided charm that comes on the Megan Charm Bracelet. It is a perfect size for either an add-on charm or to wear on a necklace. It is made of lead-free

Dhs 215

JEWELRY

Accessories

HEART KEY RING

take your images with you

Keep those you love close to your heart with this heart-shaped pendant attached to a round key ring.

Dhs 260



HORSESHOE KEY RING

take your images with you

Dhs 295

Showcase two images front and back on the $\frac{15}{16}$ " square pendant that dangles from a steel horseshoe key ring.

CELL PHONE CHARM

images to go

Made just like our jewelry charms, this fun little $\frac{1}{2}$ -inch charm attaches to your cell phone - personalization is the word!

Dhs 115



MORE ITEMS AVAILABLE:

- * Business card holdersDhs 120
- * Mirror Compact.....Dhs 120
- * Makeup/ toiletry bagsfrom Dhs 450
- * Photo handbagsfrom Dhs 1100

if you have anything else in mind, just ask.